

Pond life cards

A selection of cards to assist children with identification, and classification, in an outdoor environment.



Royalty free photos downloaded from www.istockphoto.com.

Additional photos ©Bev Evans, 2006

www.communication4all.co.uk



backswimmer



How many legs?

0

2

4

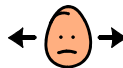
more



Was it in the water?



yes



no



caseless caddis fly



How many legs?

0

2

4

more



Was it in the water?



yes



no



damselfly



How many legs?

0

2

4

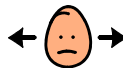
more



Was it in the water?



yes



no



diving beetle



How many legs?

0

2

4

more



Was it in the water?



yes



no



dragonfly



How many legs?

0

2

4

more



Was it in the water?



yes



no



frog



How many legs?

0

2

4

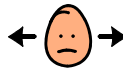
more



Was it in the water?



yes

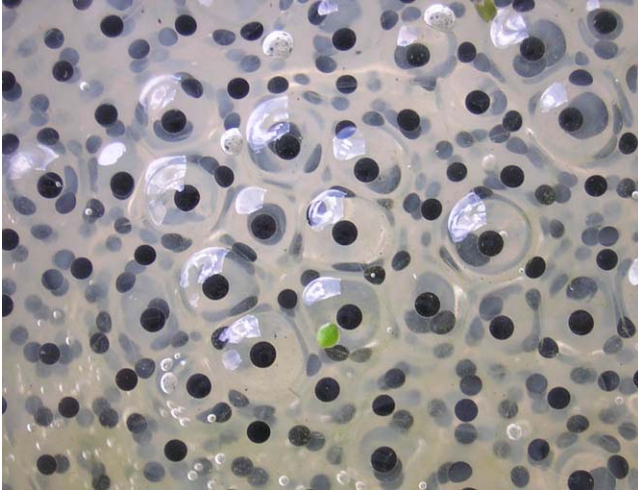


no



© The Evans 2007

frog spawn



How many legs?

0

2

4

more



Was it in the water?



yes



no



froglet



How many legs?

0

2

4

more



Was it in the water?



yes



no



newt



How many legs?

0

2

4

more



Was it in the water?



yes



no



nymph



How many legs?

0

2

4

more



Was it in the water?



yes



no



pond mite



How many legs?

0

2

4

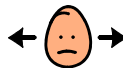
more



Was it in the water?



yes



no



pondskater



How many legs?

0

2

4

more



Was it in the water?



yes



no



stickleback



How many legs?

0

2

4

more



Was it in the water?



yes



no



tadpoles



How many legs?

0

2

4

more



Were they in the water?



yes



no



water boatman



How many legs?

0

2

4

more



Was it in the water?



yes



no



whirligig beetles



How many legs?

0

2

4

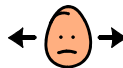
more



Were they in the water?



yes

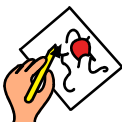


no





I found a



How many legs?

0

2

4

more



Was it in the water?

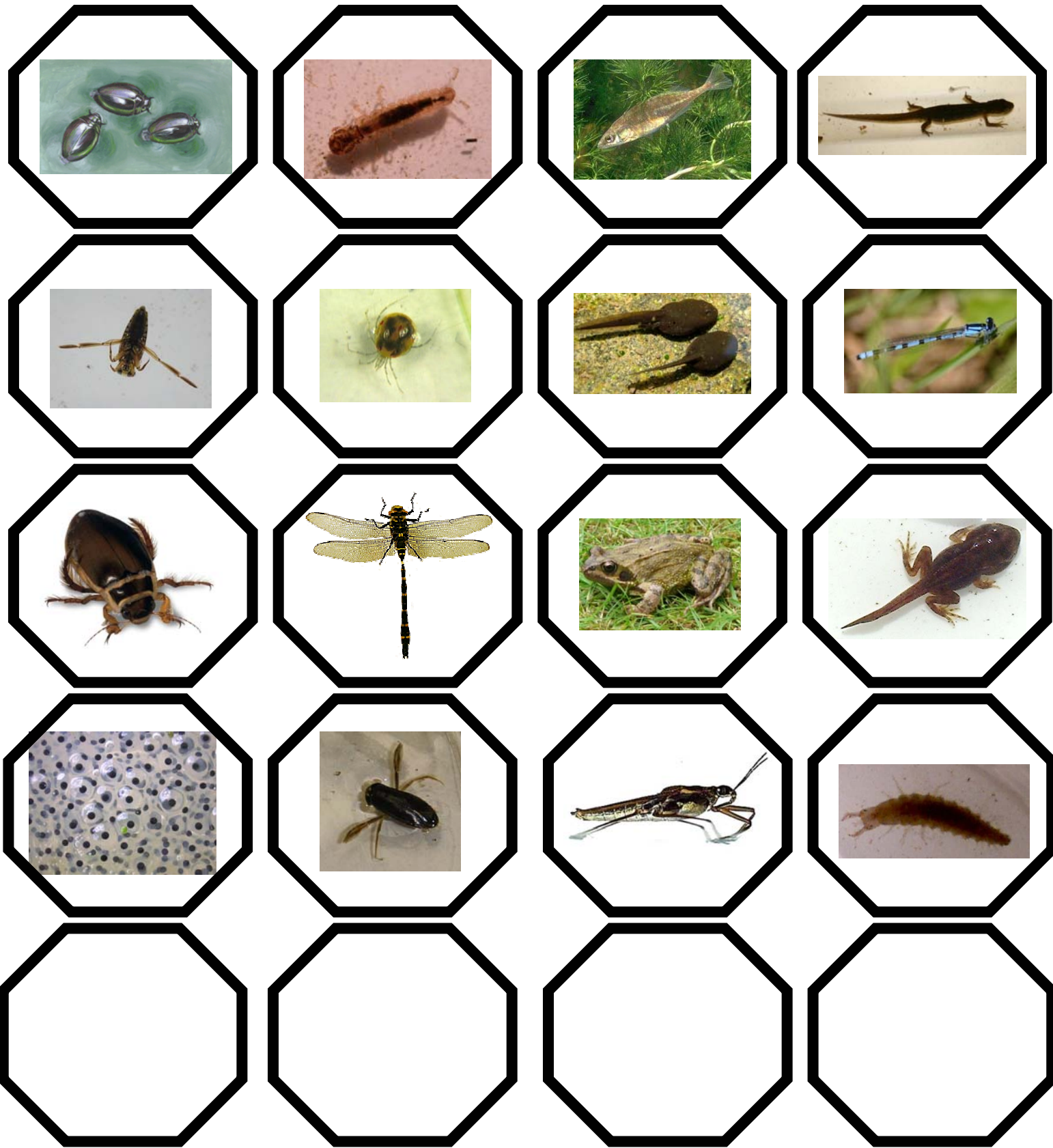


yes



no





Print off as many tokens as required for sorting, counting or data handling. The blanks are for any additional pond life you might discover!