

'I Can...' Science statements: Experimental and Investigative Science

Level 5



I can identify key factors to consider in scientific investigations.



'I Can...' Science statements: Experimental and Investigative Science

Level 5



I can make predictions based on previous scientific knowledge and understanding.



'I Can...' Science statements: **Experimental and Investigative Science**

Level 5

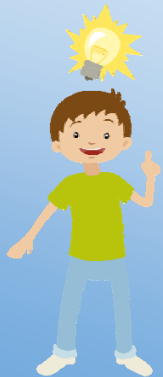


I can select suitable equipment for a range of tasks and use it with care and safety.



'I Can...' Science statements: **Experimental and Investigative Science**

Level 5



I can make observations and measurements with precision and accuracy.



'I Can...' Science statements: **Experimental and Investigative Science**

Level 5



I am beginning to check my results and make simple explanations about any differences I might note.



'I Can...' Science statements: **Experimental and Investigative Science**

Level 5



I can record observations and measurements systematically and present data as line graphs.



'I Can...' Science statements: Experimental and Investigative Science

Level 5



I am able to draw conclusions that are consistent with the evidence using my scientific knowledge and understanding.

